

High Torque 1-axis NC milling head

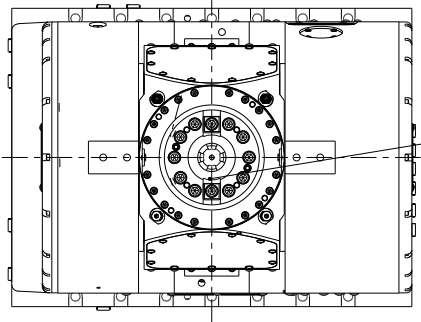
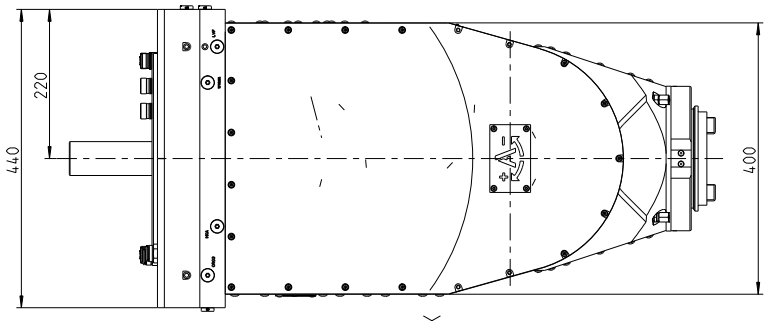
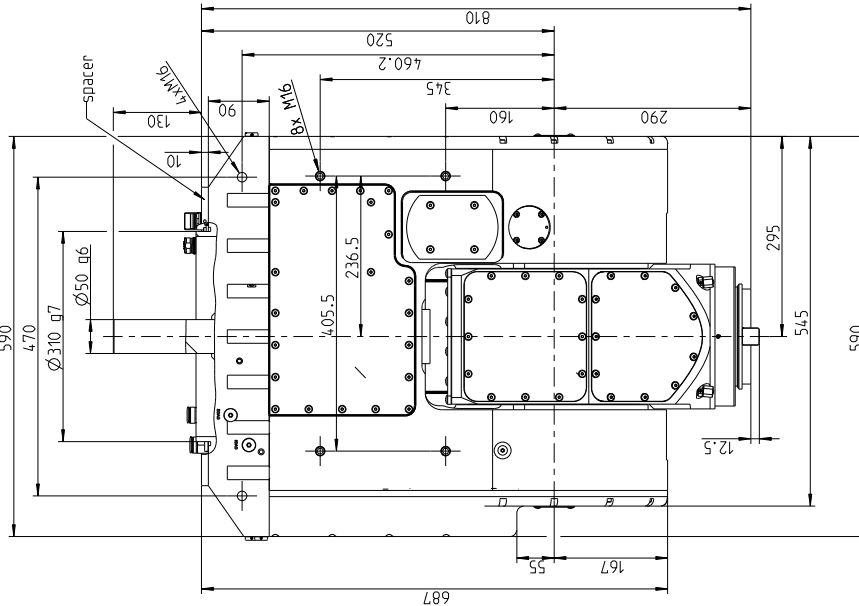
HEADtec

MH32-1NC-0L

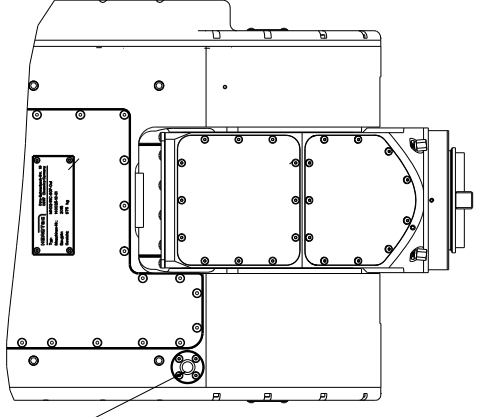
- High torque worm gear driven A-axis
- High torque spindle driven by machine
- High speed capability up to 6000 rpm



Output Speed	Output Torque	Ratio	Swivel Torque	Clamping Torque	Mass
6000 rpm	1000 Nm	0,8	3200 Nm	5000 Nm	670 kg



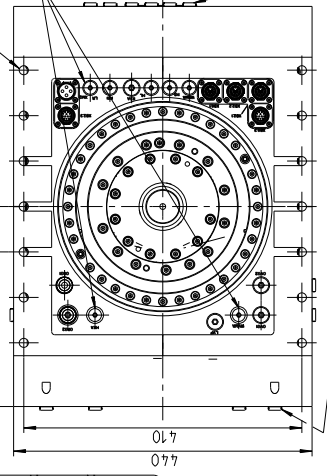
tool clamp
SK50 DIN69871
ANSI B5.50 (CAT50)
HSK-A100 DIN69893



tool unclamp button

view X

connectors on top



connectors on side
(only for service)

date	
company	
signature	

certified and approved

Dateiname der Zeichnung: 14.0035-0000-00		Dateitype: ASSEM	
Allgemeintol.: DIN ISO 2768-mk		Werkstoff: DIN 6764	
Maßstab: 1:5		Gew.: 669kg	
Bearb. Norm: 04.02.95		Name: P. Reith	
Datum:		Dateiname des Zeichnungsprojektes: 14.0035-0000-00	
Dateiname des Zeichnungsprojektes: 14.0035-0000-00		1-NC-milling head MH32-1NC-SGF-0L	
Verf.:	Anw.	Datum	Urspr.:
			14.0035-0000-00-Layout.c
			Blatt 1
			1 BL.
			(Ers.d.)