

## RAM Built In Unit with Pick Up Ready to install

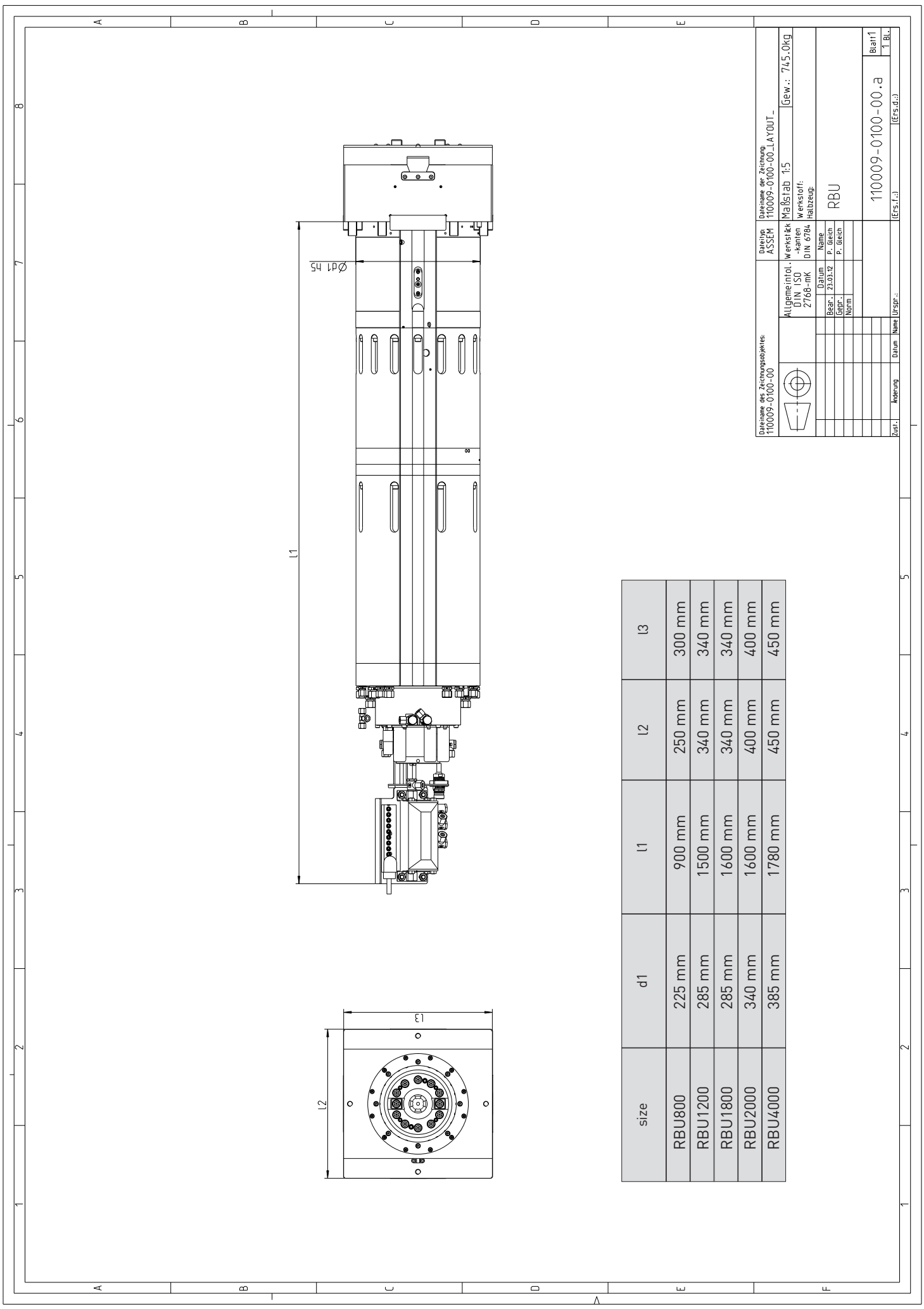
HEADTEC

# RBU

- Built in water cooled motor
- 2 speed water cooled gearbox with hollow shaft
- High torque spindle
- Pick up interface for milling heads



Size	Speed	Output Torque	Ratio	Mass	Tool Holder
RBU800	4000 rpm	800 Nm	5	350 kg	SK50/HSK-A100
RBU1200	3000 rpm	1200 Nm	4,5	750 kg	SK50/HSK-A100
RBU1800	3000 rpm	1800 Nm	5	800 kg	SK50/HSK-A100
RBU2000	3000 rpm	2000 Nm	5	900 kg	SK50/HSK-A100
RBU4000	3000 rpm	4000 Nm	5	1450 kg	SK50/60/HSK-A100/125



size	d1	l1	l2	l3
RBU800	225 mm	900 mm	250 mm	300 mm
RBU1200	285 mm	1500 mm	340 mm	340 mm
RBU1800	285 mm	1600 mm	340 mm	340 mm
RBU2000	340 mm	1600 mm	400 mm	400 mm
RBU4000	385 mm	1780 mm	450 mm	450 mm

Dateiname des Zeichnungsobjektes: 110009-0100-00		Dateityp: ASSEM		Dateiname der Zeichnung: 110009-0100-00_LAYOUT_	
Allgemeintol. - Werkstoff: DIN ISO 2768-mK DIN 6784		Maßstab: 1:5		Gew.: 745,0kg	
Bearb. - Datum: Gepr. - 23.03.12		Name: P. Gleich		Werkstoff: RBU	
Neim:		P. Gleich		110009-0100-00.a	
Zust.	Änderung	Datum	Name	Urspr.:	Blatt1
				(Ers.f.):	T.BL.
				(Ers.d.):	