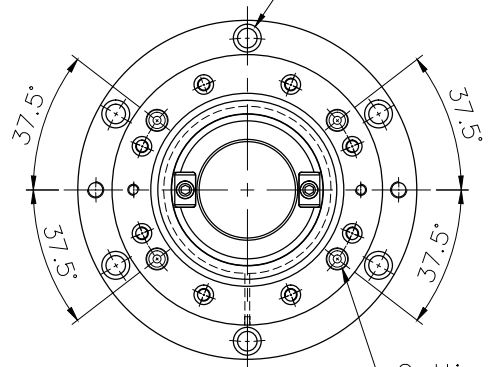
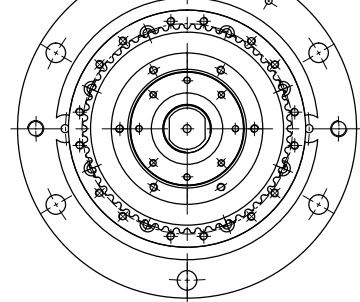


6- $\phi 14$ THRU
C/BORE $\phi 20 \times 13$ DP
P.C.D 220

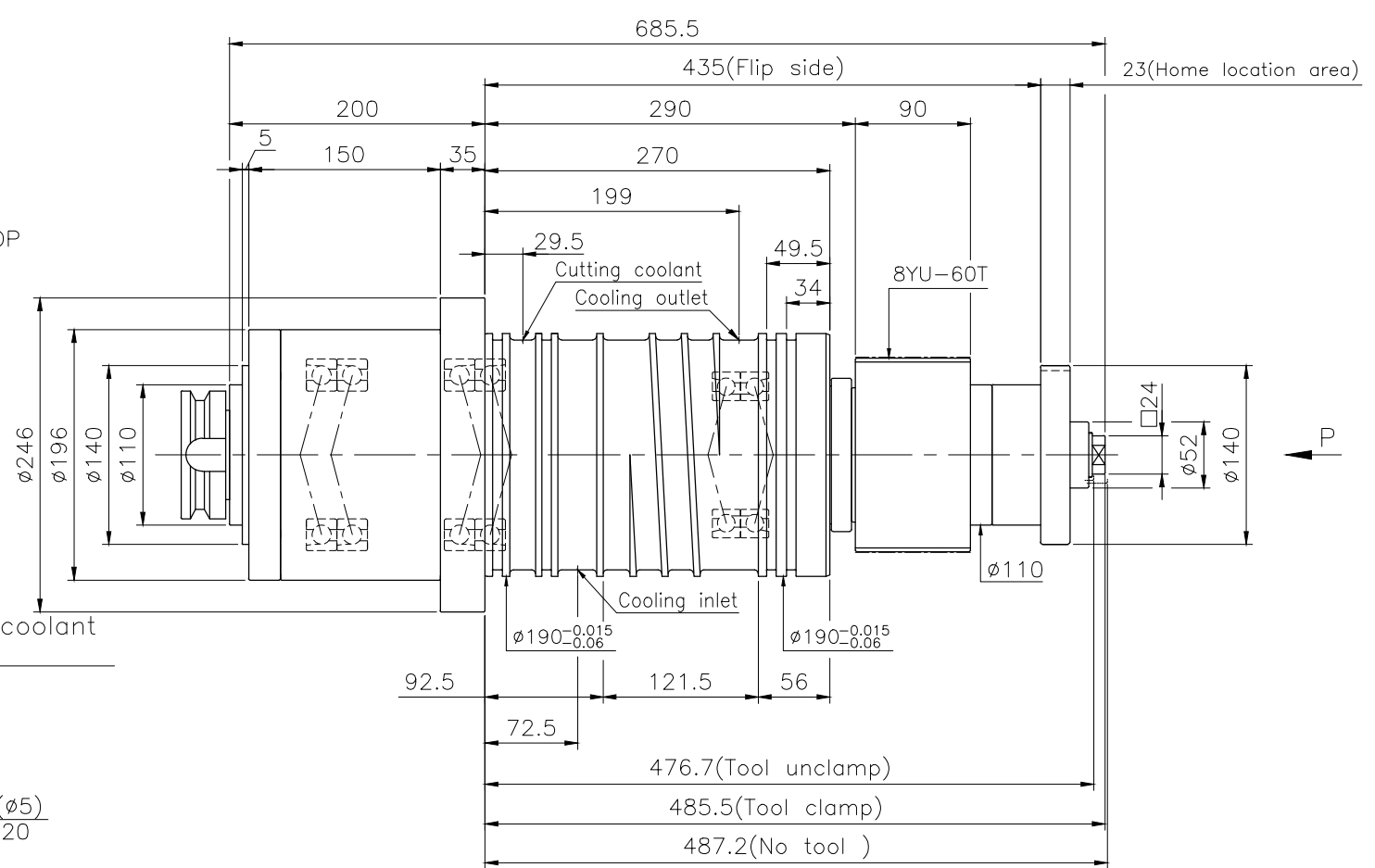


Cutting coolant nozzle
(4 pl's)

32.5°
Air seal($\phi 5$)
P.C.D. 220



P View



| | |
|-----------------------|--------------------|
| Spindle max. speed | 6,000 rpm |
| Tool system | BT50 |
| Clamping force | 1,800 \pm 100kgf |
| Spindle bearings I.D. | $\phi 100$ |
| Bearings lubrication | GREASE |
| Cooling system | OIL |
| Remark | Std Type Spindle |

| | | | | | | | | | |
|---|------------------|-------------|------------|------------|--------------------|----------|-----|---------|-------------|
| PERMISSIBLE MACHING BASIC DIMENSION DEVIATIONS | | | | | | DRAWN | | | NAME |
| >0 | >6 | >30 | >120 | >400 | >1000 | | | | |
| ± 0.05 | ± 0.10 | ± 0.15 | ± 0.20 | ± 0.30 | ± 0.50 | CHECKED | | | |
| PERMISSIBLE DRILLING BASIC DIMENSION DEVIATIONS | | | | | | MATERIAL | | DWG.NO. | |
| | | | | | $+0.25$ -0.05 | | | | |
| PERMISSIBLE ANGLE BASIC DIMENSION DEVIATIONS | | | | | | SCALE | 1:4 | | 536A060_DIM |
| | | | | | $\pm 0.5^\circ$ | | | | |
| ver. coordinates | Changing content | Modified by | date | | | | | | |

