

setco

VIBEPRO-220 Generation 3

WIRELESS 2 AXIS ACCELEROMETER

*A Compact, Convenient and Versatile Solution
for Vibration Measurement*



DESCRIPTION

Our generation 3 VIBEPRO-220 is the first and only wireless bi-axis accelerometer on the market. The automatically activated external channel can connect a tachometer for balancing applications or an additional sensor for phase measurement. VIBEPRO has optimized the 220 ergonomics enabling the user to easily move the sensor from machine to machine. The generation 3 is more compact than its predecessor allowing deployment in tight, hard to reach spaces. Waterproof quattro gaskets alongside rugged construction meet the safety requirements of explosion proof applications. Despite imitators, the VIBEPRO 220 maintains your total vibration measurement supremacy.

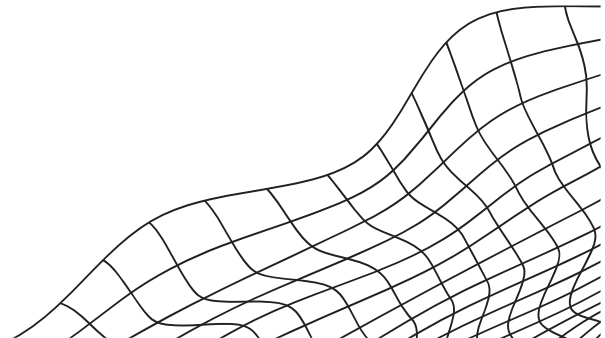
FEATURES

- Works out of the box with all existing apps
- Supports tachometer for balancing
- Supports 2nd accelerometer for apps that require it
- 30 day standby battery, with 12 hours of continuous use
- Easily swappable low cost battery and/ or rechargeable replacements



INCLUDES

VIBEPRO Wireless Sensor and Receiver, 3 batteries, "Getting Started Guide", Rare Earth Magnet Base

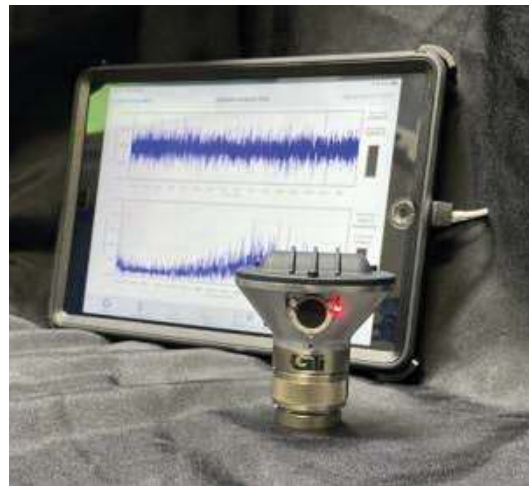
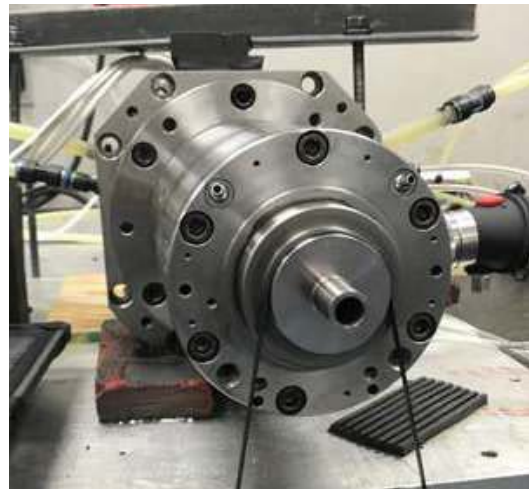


BENEFITS OF VIBEPRO'S WIRELESS SYSTEM

- **Safety:** Separate the accelerometer from the iPad to measure assets in dangerous areas.
- **Convenience:** No more dealing with wires, connectors and other hassles.
- **Universal Support:** Out of the box support for any computer that has vibration analysis, balancing or other related software. Both internal accelerometer and external input channel work across multiple devices with appropriate software.
- **Balancing:** VIBEPRO's wireless accelerometer was designed from day one to support a tachometer to enable wireless balancing. Every unit is capable of balancing, even if the balancing upgrade wasn't purchased initially.

SPECIFICATIONS:

- **Battery type:** CR123 lithium
- **Physical size (without magnetic base):**
52mm height, 64mm width, 63mm length
(including connector protrusion)
- **External sensor input connector:** M12 male
- **External input sensor excitation voltage:** 3.3V
- **Internal/external channels:**
>110dB dynamic range
- **Power input voltage:** 5V through
IP67 style mini USB-B connector
- **Case Ingress Protection:** IP65
- **Sampling rate:** 44,100 sps or 48,000
sps (host device dependent)
- **Operating Temperature range:** -65 to +185°F
- **Range:** $\pm 20g$ / $\pm 200g$ ms²
- **Mounting:** 1/4"-28 female thread
- **Base Material:** Stainless steel
- **Case Construction:** Glass filled polyamide
- **Button Material:** Glass filled polyamide
- **Button Indicator Color:** Red
- **Button Ingress Protection:** IP67
- **No Latency**
- **Wireless Spectrum:** 2.4 GHz
- **Analog Digital Conversion Rate:**
44,100/48,000 sps



EXPANDING THE VIBEPRO-220

CHANNEL 2 ADD-ONS

TACHOMETER AND ACCELEROMETER

The second channel of the VIBEPRO-220 supports either a tachometer or an accelerometer. The tachometer enables balancing, phase analysis, and other custom applications. The accelerometer can be used for testing vibration transmissibility. VibePro also supports both channels; displaying both channels simultaneously

- Tachometer Apps: BalancePro, BalancePro Field, PhasePro, Balance3W
- Accelerometer Apps: VibePro, Vibration Transmissibility



setco

Setco Cincinnati: 1-800-543-0470

Setco Detroit: 1-248-888-8989

Setco Atlanta: 1-678-407-6206

www.setco.com

The contents of this publication are the copyright of the publisher and may not be reproduced (even extracts) unless prior written permission is granted. Every care has been taken to ensure the accuracy of the information contained in this publication but no liability can be accepted for any loss or damage whether direct, indirect or consequential arising out of the use of the information contained herein.